



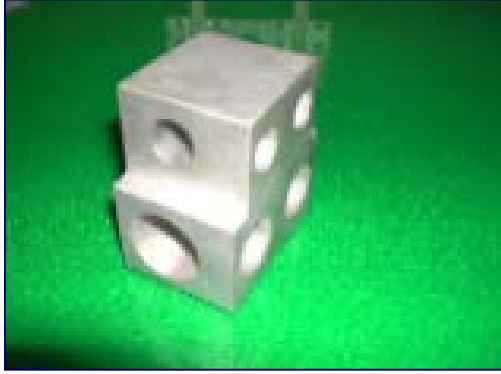
Electrical Material



Hanametal Co., Ltd

Electrical Material

1. Machined Copper Products & Coating



- Tin coating after machined Copper products



- Ag coating after machined Copper products

2. D-Type Bus Bar



- Specially formed D-type Bus bar for distributors

3. Bi- Metal Contact



- Copper and Aluminum Bi-Metal contacts by progressive welding

**4.
Equipotential
Bar**



- Feature:
by water cooling with 15Ø hole in the center line to prevent over-heating of the products working so mass-production available



- Final Product
 - Water cooling of OFC materials
(40~60T * 50~200W
* Max 15000L)

**5.
Flexible**



- Copper Flexible
 - Connecting parts for high voltages
(50T * 550W * 1500L)
 - Buffer area on heat expansion



- Aluminum Flexible
(6T * 400 * 750L)

<p>6. Head Bar</p>		<ul style="list-style-type: none"> • Rolled bus bars for high capacity (80T * 550W * 3300L)
<p>7. Bus Bar</p>		<ul style="list-style-type: none"> • Silver plated (50~80T * 200~600W * 1000~8000L)
<p>8. PB Anode Plate</p>		<ul style="list-style-type: none"> • Materials to refine waste Sulphur-acid liquids (Bus bar and Pb acid plate assembled)
<p>9. Short Bar</p>		<ul style="list-style-type: none"> • Electrical contact points parts

**10.
Diverter
S/W**



- Diverter S/W under part
(High voltage shutter)



- Diverter S/W side
(High voltage shutter)